



you're



just



a



few



steps



away



**six degrees**  
FLOORING SURFACES™

**Radius™** VINYL FLOORING



# Radius™ COLLECTION

The Radius™ Collection offers a wide selection of wood and stone visuals to fit any aesthetic need. It is the ideal flooring product for a variety of applications, including, but not limited to, corporate and medical office spaces, retail and residential. Our durable wear layer topped with a UV-cured ceramic-reinforced polyurethane finish provides maximum durability while ensuring long lasting beauty without the use of an on-site finish. Proudly made in the USA, the Radius™ Collection is produced and inventoried for quick turnaround times.

With a variety of complementary color selections and patterns, you're just a few steps away from *durability and beauty in one affordably priced package.*



Oxford Gray  
RP324\_C05



Dillon Metal  
RT269\_C10,  
Star Vintage  
RT269\_C03

*On the cover:*  
Wedgewood  
RP239\_C10



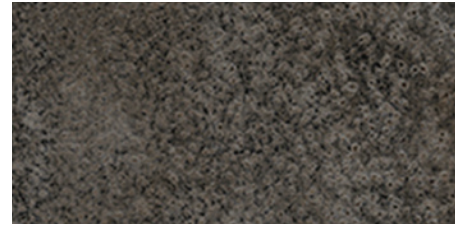
# Radius™ Tiles • 12" x 24"



RT269\_C02 Perry Vintage



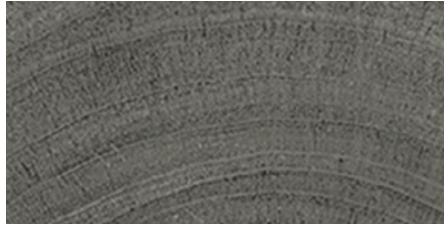
RT317\_C05 (Crossover to Compass Richmond CT317\_C05) Hays Beige



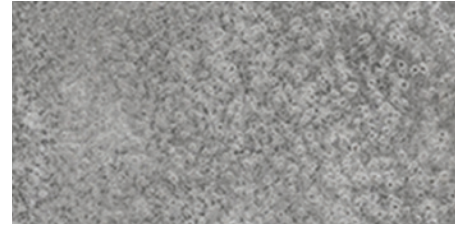
RT315\_C02 (Crossover to Compass Detroit CT315\_C02) Eagle Point



RT362\_C11 Stearns Slate



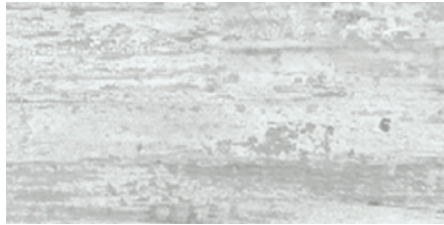
RT317\_C06 (Crossover to Compass Baltimore CT317\_C06) Hughes Gray



RT315\_C04 (Crossover to Compass DC CT315\_C04) Summit Stone



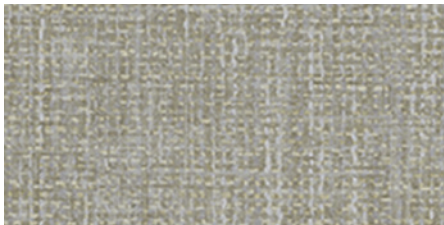
RT349\_C01 Potter



RT269\_C03 Star Vintage



RT341\_C16 Stratford



RT365\_C08 Findlay Tweed



RT269\_C10 Dillon Metal



RT341\_C02 Summer

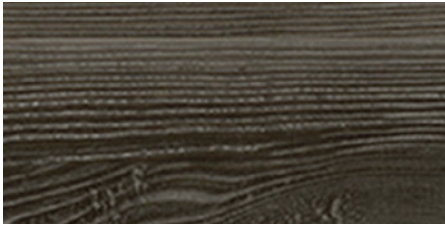


## The Six Degrees of Radius™ VINYL FLOORING

- A designer-inspired palette of colors and patterns, all at a single price point
- Enhanced performance and durability made possible by the addition of our Ceramic Reinforced Urethane (CRU)
- A lower maintenance flooring option which does not require a finish
- An eco-friendly product made from locally sourced raw materials
- Simple glue down installation allows for greater pattern/design flexibility
- Readily available ... made and inventoried in the USA!

With a variety of style options and the eco-friendly nature of Radius™, you're just a few steps away from *a floor that delivers the utmost in design and performance.*

# Radius™ Planks • 7-1/8" x 47-1/4"



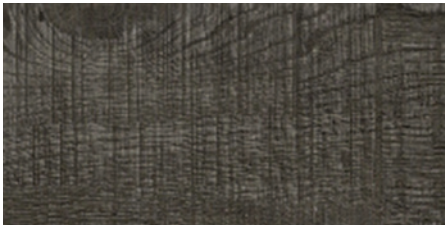
RP159\_C15 Lester Pine



RP233\_C17 Silver Steele



RP314\_C07 Lakeview



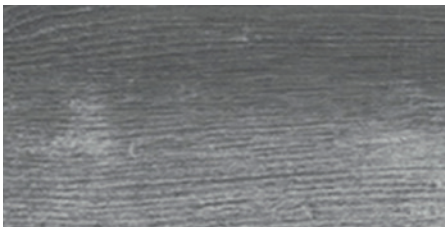
RP316\_C04 (Crossover to Compass Stowe CP316\_C04) Nye Sawn Cut



RP233\_C21 Burnham Oak



RP236\_C13 (Crossover to Compass Portland CP236\_C13) Taylor Taupe



RP324\_C06 Watson Iron



RP232\_C04 Union Plank



RP235\_C05 Clark Maple



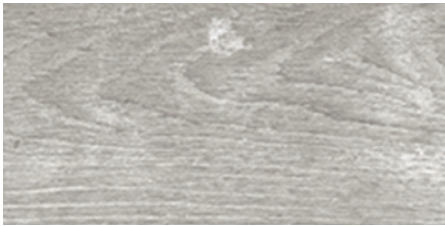
RP208\_C11 Miller Classic



RP232\_C12 Fremont Plank



RP233\_C20 Elwood



RP324\_C05 Oxford Gray



RP233\_C57 Wagner White



RP350\_C01 Vintage VanBuren



Taylor Taupe RP236\_C13



Briggs Rustic RP131\_C02





RP233\_C08

McDougal Oak



RP381\_C02

Meadow Lane



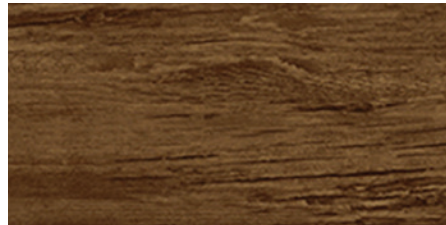
RP239\_C10

Wedgwood



RP251\_C09

Thomas Classic



RP210\_C04

Alton Wood



RP266\_C08

Tiffin Hand Scraped



RP250\_C01

Eastern Maple



RP147\_C26

Grant Ginger



RP330\_C02

(Crossover to Compass  
Cleveland CP330\_C02)

Woodland



RP235\_C08

Crocker Maple



RP188\_C14

(Crossover to Compass  
Savannah CP188\_C14)

Glenview



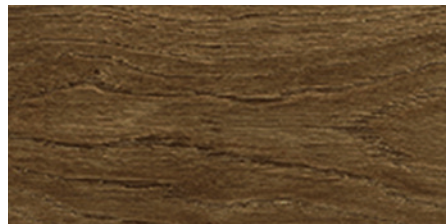
RP131\_C02

Briggs Rustic



RP235\_C15

Columbus Red



RP220\_C12

(Crossover to Compass  
Birmingham CP220\_C12)

Alexander Oak



RP174\_C14

Cooper Brown



McDougal Oak RP233\_C08



**six degrees**  
FLOORING SURFACES™



# ○ The Six Degrees of Sustainability

At Six Degrees, we are dedicated to the environment and work tirelessly to provide LVT products that are not only beautiful, but durable and eco-friendly, as well. We are proud to be a strong environmental steward and continue to work to improve upon our sourcing and production practices, offering additional satisfaction that you have selected a floor with the environment in mind.

With Radius™ Vinyl Plank and Tile, you're just a few steps away from *creating a more eco-friendly environment inside and out.*

- Over 50% of our raw materials are sourced within a 100 mile radius of our manufacturing facility.
- Our floors are 100% recyclable after use, which means even when your life with the floor is complete, a new product can be created... and that means less waste in landfills.
- Because all Six Degrees products are proudly manufactured in the USA, there is less carbon footprint than most LVT options. Less transport and fuel costs are needed to get your new flooring to you, our valued customer.
- Our products do not require an additional finish, which means less chemicals, less water and less energy are needed to maintain them and keep them looking beautiful.
- Six Degrees uses only 100% virgin vinyl materials. There is no recycled content and therefore no need to worry about contaminants in your flooring.
- Only Non Phthalate plasticizers are used in the production of our floors. Six Degrees was the first in the industry to make this important change.



Stratford RT341\_C16,  
Cooper Brown RP174\_C14



# Technical

## FEATURES

- Easy to Maintain
- Qualifies for LEED® Credits
- GREENGUARD Gold Certified
- Ceramic-Reinforced UV-Cured Finish
- Enhanced with EnviroSD™ Anti-Bacterial Agent
- Extremely Durable
- Excellent Indentation Resistance
- Excellent Chemical Resistance
- Excellent Slip Resistance
- 100% Recyclable



## RADIUS™ PLANK SPECIFICATIONS

Nominal Dimensions:	7-1/8" x 47-1/4" x 3 mm plank
Finish:	Embossed 12 mil
Quantity Per Carton:	15 planks (7-1/8" x 47-1/4")
Sq. Ft. Per Carton:	34.84 sq. ft./carton

## RADIUS™ TILE SPECIFICATIONS

Nominal Dimensions:	12" x 24" x 3 mm tile
Finish:	Embossed 12 mil
Quantity Per Carton:	18 tiles (12" x 24")
Sq. Ft. Per Carton:	36 sq. ft./carton

## WARRANTY

- 10-Year Commercial Warranty
- 20-Year Residential Warranty

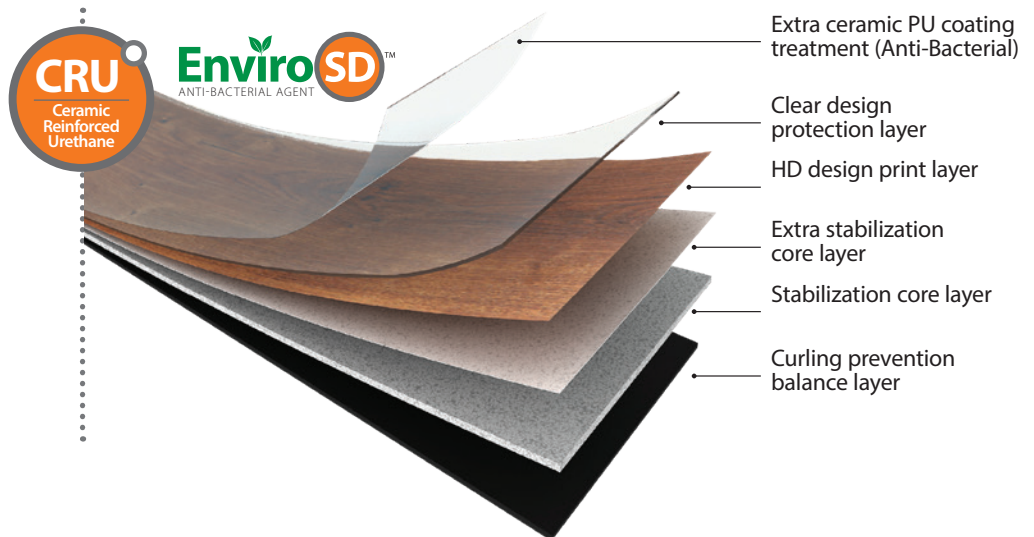
## TEST INFORMATION

- ASTM F 1700 – Solid Vinyl Tile: Class III, Type A & B
- ASTM E 648 – Critical Radiant Flux: Class I, >.45 W/cm<sup>2</sup>
- ASTM E 662 – Smoke Density: Pass
- ASTM D 2047 – Slip Resistance: > 0.60
- ASTM F 970 – Static Load Limit: 250 PSI, < .005" Indentation
- ASTM F 925 – Chemical Resistance: Excellent (chart available)
- ASTM F 1515 – Light Stability: Pass



Potter RT349\_C01,  
Eagle Point RT315\_C02

For the most current and complete technical, installation and maintenance information, please visit [sixdegreesflooring.com](http://sixdegreesflooring.com)



**Welcome** to the exciting world of Six Degrees Flooring Surfaces™. When you select a floor from Six Degrees, you can rest assured you have selected one made from the highest quality, locally-sourced raw materials in a state of the art, family-owned factory, right here in the USA. Our products are both durable and beautiful, and we take great pride in providing our customers with the best possible service and care. Innovative production technology, superior wear and scratch resistance, and our commitment to both you, our customer, and the environment are what set us apart from the rest.

American made. American served. You're just a few steps away from *the high quality and high style of Six Degrees Flooring Surfaces.™*

*Designer Inspired*

*Readily Available*

*Highly Durable*

*Low Maintenance*

*Eco Friendly*

*Easy Installation*

you're just a few steps away



**six degrees**  
FLOORING SURFACES™

931 South Springville Avenue • Fostoria, Ohio 44830

**844-432-5885**

**sixdegreesflooring.com**

